

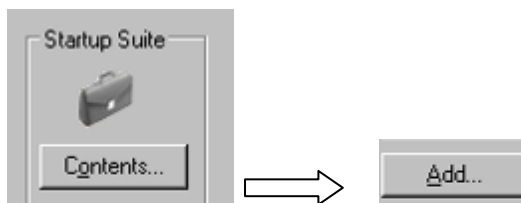


## Installation Instructions

1. Make sure that you have unzipped the files to this location: **C:\3CM\Pipe-ANSI\**

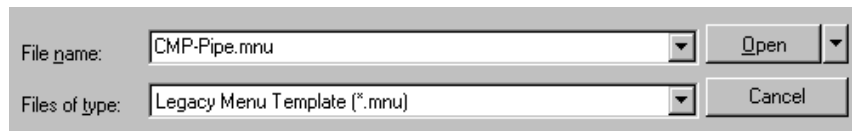


2. Type APPLOAD on AutoCAD's command line. Hit the "Contents..." Button, then hit the "Add..." Button.



Point to the following file: **C:\3CM\Pipe-ANSI\PipeFittings.dvb** Click the "Add" button then close the dialog boxes.

3. Type MENULOAD on AutoCAD's command line. Choose "~(\*.mnu)" from the "Files of type" pull down (For AutoCAD 2006 & later).



Select Browse then point to the following file: **C:\3CM\Pipe-ANSI\CMP-Pipe.mnu** then click "Open". Select the "Load" button then close the dialogue boxes.

4. Close then restart AutoCAD & you're ready to start using the program

Note: If the Icon isn't on screen then Right-Click on AutoCAD's toolbar border and select the "CMP\_PipeFittings\_Toolbar".

